

## Search criteria:

Keywords:  
All  
Area: All

Minimum price: £0  
Maximum price: Unlimited  
Bedrooms: 0+

Page 1 of 6  
16 May 2024  
20:00:09



Home Farm, Gatacre, Claverley,  
Wolverhampton

- House - detached
- 7 bedrooms
- 5 bathrooms
- 3 reception rooms

Offers Around £1,500,000



Trafalgar Barn, Worfield, Bridgnorth

- Barn conversion
- 4 bedrooms
- 3 bathrooms
- 3 reception rooms

Offers Around £850,000



Ravenscroft, Bell Road, Trysull,  
Wolverhampton

- House - detached
- 4 bedrooms
- 3 bathrooms
- 2 reception rooms

Offers Around £825,000



Garden Cottage, 4 Shop Lane, Brewood

- House - detached
- 5 bedrooms
- 2 bathrooms
- 4 reception rooms

Offers Around £759,500



5 Coppice Road, Finchfield,  
Wolverhampton, WV3 8BJ

- House - detached
- 4 bedrooms
- 3 bathrooms
- 2 reception rooms

Offers Around £725,000



59 Sabrina Road, Wolverhampton

- House
- 4 bedrooms
- 2 bathrooms
- 3 reception rooms

Offers Around £695,000



The Cottage, Middleton Scriven,  
Bridgnorth

- Cottage - detached
- 3 bedrooms
- 1 bathroom
- 3 reception rooms

Offers Around £675,000



47 Fairfield Drive, Codsall,  
Wolverhampton

- House - detached
- 4 bedrooms
- 2 bathrooms
- 2 reception rooms

Offers Around £659,950



4 Mayfield Road, Albrighton, WV7 3JY

- Bungalow - dormer detached
- 4 bedrooms
- 2 bathrooms
- 4 reception rooms

Offers Around £649,950



## Search criteria:

Keywords:  
All  
Area: All

Minimum price: £0  
Maximum price: Unlimited  
Bedrooms: 0+

Page 2 of 6  
16 May 2024  
20:00:09



The Crofts and The Cottage, 32 Church Hill, Penn

- House - detached
- 5 bedrooms
- 4 bathrooms
- 5 reception rooms

Offers Around £645,000



Fitzallen House, 3 Cound Park Drive, Cound, Shrewsbury

- House - detached
- 4 bedrooms
- 3 bathrooms
- 3 reception rooms

Offers Around £600,000



St. Johns Close, Swindon, Dudley

- House - detached
- 4 bedrooms
- 2 bathrooms
- 2 reception rooms

Offers In The Region Of  
£599,995



The Croft, 120 Post Office Road, Seisdon, Wolverhampton

- Cottage
- 3 bedrooms
- 1 bathroom
- 2 reception rooms

Offers Around £595,000



49 Old Farm Drive, Codsall, Wolverhampton. WV8 1GF

- House - detached
- 4 bedrooms
- 3 bathrooms
- 3 reception rooms

Offers Around £585,000



Ripley Gardens, Worcester

- House - detached
- 4 bedrooms
- 3 bathrooms
- 2 reception rooms

Price Guide £550,000



23 St Marys Street, Bridgnorth

- House - terraced
- 4 bedrooms
- 2 bathrooms
- 1 reception room

Offers Around £550,000



The Old Post Office, High Street, Claverley, Wolverhampton

- House - detached
- 3 bedrooms
- 2 bathrooms
- 3 reception rooms

Offers Around £525,000



Mount Road, Penn, Wolverhampton

- Bungalow - dormer detached
- 4 bedrooms
- 2 bathrooms
- 2 reception rooms

Offers In The Region Of  
£525,000



## Search criteria:

Keywords:  
All  
Area: All

Minimum price: £0  
Maximum price: Unlimited  
Bedrooms: 0+

Page 3 of 6  
16 May 2024  
20:00:09



1 & 2 New Cottages, Oaken Lane, Oaken

- House - end terrace
- 5 bedrooms
- 2 bathrooms
- 3 reception rooms

Offers Around £499,950



46 Wood Road, Codsall, Wolverhampton, WV8 1DN

- House - detached
- 3 bedrooms
- 3 bathrooms
- 3 reception rooms

Offers Around £459,950



44 Romsley View, Alveley, Bridgnorth

- House - detached
- 4 bedrooms
- 1 bathroom
- 2 reception rooms

Offers Around £450,000



49 Canterbury Road, Penn, Wolverhampton

- House - semi-detached
- 5 bedrooms
- 2 bathrooms
- 2 reception rooms

Offers Around £379,950



56 Bantock Gardens, Finchfield

- House - detached
- 3 bedrooms
- 2 bathrooms
- 2 reception rooms

Offers Around £375,000



The Holloway, Swindon, Dudley

- House - detached
- 4 bedrooms

Offers In The Region Of  
~~£375,000~~



27 Greenway Avenue, Alveley, Bridgnorth

- House - detached
- 4 bedrooms
- 2 bathrooms
- 1 reception room

Offers Around £365,000



1 Ackleton Meadows, Stableford, Bridgnorth

- House - end terrace
- 3 bedrooms
- 2 bathrooms
- 2 reception rooms

Price Guide £350,000



34 Sandy Lane, Codsall, WV8 1EJ

- House - semi-detached
- 3 bedrooms
- 1 bathroom
- 2 reception rooms

Offers Around £345,000



## Search criteria:

Keywords:  
All  
Area: All

Minimum price: £0  
Maximum price: Unlimited  
Bedrooms: 0+

Page 4 of 6  
16 May 2024  
20:00:09



50 Ivy Place, Church Lane, Alveley, Bridgnorth

- House - end terrace
- 3 bedrooms
- 1 bathroom
- 2 reception rooms

Offers Around £300,000



105 Hook Farm Road, Bridgnorth

- Bungalow - detached
- 3 bedrooms
- 1 bathroom
- 1 reception room

Offers Around £299,950



Linton Road, Wolverhampton

- House - semi-detached
- 3 bedrooms
- 1 bathroom
- 2 reception rooms

Offers Around £295,000



1 Brown Clee Road, Ditton Priors, Bridgnorth

- House - semi-detached
- 3 bedrooms
- 1 bathroom

Offers Around £285,000



25 Newbridge Street, Newbridge, Wolverhampton, WV6 0EE

- House - end terrace
- 4 bedrooms
- 4 bathrooms
- 4 reception rooms

Offers Around £275,000



Planks Lane, Wombourne, Wolverhampton

- House - terraced
- 2 bedrooms

Offers In The Region Of  
~~£269,950~~



Redhill Avenue, Wombourne, Wolverhampton

- House - semi-detached
- 3 bedrooms
- 1 bathroom
- 2 reception rooms

Offers In The Region Of  
~~£269,950~~



24 Greenfields Road, Bridgnorth

- Bungalow - semi detached
- 2 bedrooms
- 1 bathroom
- 1 reception room

Offers Around £265,000



Millfields Way, Wombourne, Wolverhampton

- House - detached
- 2 bedrooms
- 1 bathroom
- 1 reception room

Offers In The Region Of  
~~£265,000~~



## Search criteria:

Keywords:  
All  
Area: All

Minimum price: £0  
Maximum price: Unlimited  
Bedrooms: 0+

Page 5 of 6  
16 May 2024  
20:00:09



26 Rainsford Crescent, Kidderminster

- House - semi-detached
- 3 bedrooms
- 2 bathrooms
- 1 reception room

Price Guide £260,000



24 Wardle Close, Bridgnorth

- House - semi-detached
- 2 bedrooms
- 1 bathroom
- 2 reception rooms

Offers Around £250,000



15 Nursery Walk, Tettenhall, Wolverhampton

- House - terraced
- 2 bedrooms
- 1 bathroom
- 1 reception room

Offers Around £239,950



61 Woodland Avenue, Wolverhampton

- House - semi-detached
- 2 bedrooms
- 1 bathroom
- 1 reception room

Offers Around £210,000



45 The Beeches, Hanover Court, Tettenhall, WV6 8QL

- Retirement Property
- 2 bedrooms
- 1 bathroom
- 1 reception room

Offers Around £195,950



Sale Agreed

Planning Permission, 40 Moatbrook Lane, Codsall, WV8 1SD

- Bungalow - detached
- 3 bedrooms
- 2 bathrooms
- 1 reception room

Offers Around £175,000



26c Bernards Hill, Bridgnorth

- House - end terrace
- 1 bedroom
- 1 bathroom
- 1 reception room

Offers Around £175,000



17 Saxonfields, Tettenhall

- House - detached
- 5 bedrooms
- 3 bathrooms
- 3 reception rooms

Per Month £2,995



5 Old Hall, Wergs Hall, Wolverhampton

- Apartment
- 3 bedrooms
- 2 bathrooms
- 2 reception rooms

Per Month £2,500

## Search criteria:

Keywords:  
All  
Area: All

Minimum price: £0  
Maximum price: Unlimited  
Bedrooms: 0+

Page 6 of 6  
16 May 2024  
20:00:09



226 Castlecroft Road, Castlecroft

- House - semi-detached
- 4 bedrooms
- 3 bathrooms
- 1 reception room

Per Month £1,400



The Ostlers, 3 Patshull Hall Mews,  
Burnhill Green

- Barn conversion
- 2 bedrooms
- 2 bathrooms
- 2 reception rooms

Per Month £1,250



14 Links Road, Penn

- House - semi-detached
- 3 bedrooms
- 1 bathroom
- 2 reception rooms

Per Month £1,150



Application Pending

18 Bull Meadow Lane, Wombourne

- House - semi-detached
- 3 bedrooms
- 1 bathroom
- 2 reception rooms

Per Month £1,025

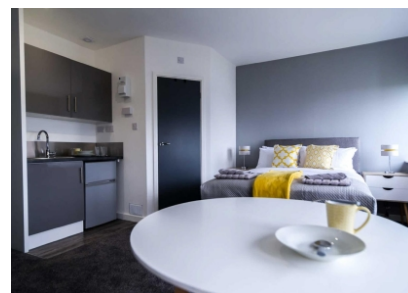


Application Pending

4 Dean Road, Wombourne

- House - terraced
- 3 bedrooms
- 1 bathroom
- 1 reception room

Per Month £950



24, Birch Street, Wolverhampton

- Apartment
- 1 bedroom
- 1 bathroom
- 1 reception room

Per Month £717



Application Pending

5 Coulter Grove, Perton

- House - semi-detached
- 1 bedroom
- 1 bathroom
- 1 reception room

Per Month £700



124a Common Road, Wombourne

- Apartment
- 1 bedroom
- 1 bathroom
- 1 reception room

Per Month £695



Havana House Flat 1, 228 Penn Road,  
Wolverhampton

- Apartment
- 1 bedroom
- 1 bathroom
- 1 reception room

Per Month £695