

Search criteria:

Keywords:
All
Area: All

Minimum price: £0
Maximum price: Unlimited
Bedrooms: 0+

Page 1 of 7
21 May 2024
01:02:01



Trafalgar Barn, Worfield, Bridgnorth

- Barn conversion
- 4 bedrooms
- 3 bathrooms
- 3 reception rooms

Offers Around £850,000



Ravenscroft, Bell Road, Trysull, Wolverhampton

- House - detached
- 4 bedrooms
- 3 bathrooms
- 2 reception rooms

Offers Around £825,000



The Croft, 15 Church Road, Albrighton, Wolverhampton

- House
- 5 bedrooms

Price £775,000



Garden Cottage, 4 Shop Lane, Brewood

- House - detached
- 5 bedrooms
- 2 bathrooms
- 4 reception rooms

Offers Around £759,500



5 Coppice Road, Finchfield, Wolverhampton, WV3 8BJ

- House - detached
- 4 bedrooms
- 3 bathrooms
- 2 reception rooms

Offers Around £725,000



59 Sabrina Road, Wolverhampton

- House
- 4 bedrooms
- 2 bathrooms
- 3 reception rooms

Offers Around £695,000



Faintree Heights, Faintree, Bridgnorth

- House - detached
- 5 bedrooms
- 4 bathrooms
- 2 reception rooms

Offers Around £680,000



The Cottage, Middleton Scriven, Bridgnorth

- Cottage - detached
- 3 bedrooms
- 1 bathroom
- 3 reception rooms

Offers Around £675,000



47 Fairfield Drive, Codsall, Wolverhampton

- House - detached
- 4 bedrooms
- 2 bathrooms
- 2 reception rooms

Offers Around £659,950

Search criteria:

Keywords:
All
Area: All

Minimum price: £0
Maximum price: Unlimited
Bedrooms: 0+

Page 2 of 7
21 May 2024
01:02:01



4 Mayfield Road, Albrighton, WV7 3JY

- Bungalow - dormer detached
- 4 bedrooms
- 2 bathrooms
- 4 reception rooms

Offers Around £649,950



The Crofts and The Cottage, 32 Church Hill, Penn

- House - detached
- 5 bedrooms
- 4 bathrooms
- 5 reception rooms

Offers Around £645,000



Fitzallen House, 3 Cound Park Drive, Cound, Shrewsbury

- House - detached
- 4 bedrooms
- 3 bathrooms
- 3 reception rooms

Offers Around £600,000



St. Johns Close, Swindon, Dudley

- House - detached
- 4 bedrooms
- 2 bathrooms
- 2 reception rooms

Offers In The Region Of
~~£599,995~~



The Croft, 120 Post Office Road, Seisdon, Wolverhampton

- Cottage
- 3 bedrooms
- 1 bathroom
- 2 reception rooms

Offers Around £595,000



Sale Agreed

49 Old Farm Drive, Codsall, Wolverhampton, WV8 1GF

- House - detached
- 4 bedrooms
- 3 bathrooms
- 3 reception rooms

Offers Around £585,000



23 St Marys Street, Bridgnorth

- House - terraced
- 4 bedrooms
- 2 bathrooms
- 1 reception room

Offers Around £550,000



The Old Post Office, High Street, Claverley, Wolverhampton

- House - detached
- 3 bedrooms
- 2 bathrooms
- 3 reception rooms

Offers Around £525,000



Mount Road, Penn, Wolverhampton

- Bungalow - dormer detached
- 4 bedrooms
- 2 bathrooms
- 2 reception rooms

Offers In The Region Of
~~£525,000~~

Search criteria:

Keywords:
All
Area: All

Minimum price: £0
Maximum price: Unlimited
Bedrooms: 0+

Page 3 of 7
21 May 2024
01:02:01



46 Wood Road, Codsall, Wolverhampton, WV8 1DN

- House - detached
- 3 bedrooms
- 3 bathrooms
- 3 reception rooms

Offers Around £459,950



18 Stretton Close, Bridgnorth

- House - detached
- 3 bedrooms
- 1 bathroom
- 1 reception room

Asking Price £450,000



44 Romsley View, Alveley, Bridgnorth

- House - detached
- 4 bedrooms
- 1 bathroom
- 2 reception rooms

Offers Around £450,000



15 Foxlands Avenue, Wolverhampton

- House - detached
- 4 bedrooms
- 1 bathroom
- 2 reception rooms

Offers Around £440,000



Oxleaze, Grange Road, Albrighton, Wolverhampton

- House - detached
- 4 bedrooms
- 1 bathroom
- 2 reception rooms

Offers Around £430,000



49 Canterbury Road, Penn, Wolverhampton

- House - semi-detached
- 5 bedrooms
- 1 bathroom
- 2 reception rooms

Offers Around £379,950



The Holloway, Swindon, Dudley

- House - detached
- 4 bedrooms

Offers In The Region Of
£375,000



1 Ackleton Meadows, Stableford, Bridgnorth

- House - end terrace
- 3 bedrooms
- 2 bathrooms
- 2 reception rooms

Price Guide £350,000



34 Sandy Lane, Codsall, WV8 1EJ

- House - semi-detached
- 3 bedrooms
- 1 bathroom
- 2 reception rooms

Offers Around £345,000

Search criteria:

Keywords:
All
Area: All

Minimum price: £0
Maximum price: Unlimited
Bedrooms: 0+

Page 4 of 7
21 May 2024
01:02:01



Apartment 3 Stockwell, Malthouse Lane, Tettenhall, Wolverhampton

- Apartment
- 2 bedrooms
- 2 bathrooms
- 1 reception room

Offers Around £329,950



7 Blakeley Heath Drive, Wombourne, Wolverhampton

- Bungalow - semi detached
- 3 bedrooms
- 1 bathroom
- 1 reception room

Offers Around £328,000



50 Ivy Place, Church Lane, Alveley, Bridgnorth

- House - end terrace
- 3 bedrooms
- 1 bathroom
- 2 reception rooms

Offers Around £300,000



105 Hook Farm Road, Bridgnorth

- Bungalow - detached
- 3 bedrooms
- 1 bathroom
- 1 reception room

Offers Around £299,950



Linton Road, Wolverhampton

- House - semi-detached
- 3 bedrooms
- 1 bathroom
- 2 reception rooms

Offers Around £295,000



25 Newbridge Street, Newbridge, Wolverhampton, WV6 0EE

- House - end terrace
- 4 bedrooms
- 4 bathrooms
- 4 reception rooms

Offers Around £275,000



Millfields Way, Wombourne, Wolverhampton

- House - detached
- 2 bedrooms
- 1 bathroom
- 1 reception room

Offers In The Region Of
£265,000



24 Greenfields Road, Bridgnorth

- Bungalow - semi detached
- 2 bedrooms
- 1 bathroom
- 1 reception room

Offers Around £265,000



26 Rainsford Crescent, Kidderminster

- House - semi-detached
- 3 bedrooms
- 2 bathrooms
- 1 reception room

Price Guide £260,000

Search criteria:

Keywords:
All
Area: All

Minimum price: £0
Maximum price: Unlimited
Bedrooms: 0+

Page 5 of 7
21 May 2024
01:02:01



Planks Lane, Wombourne,
Wolverhampton

- House - terraced
- 2 bedrooms

Offers In The Region Of
~~£259,950~~



24 Wardle Close, Bridgnorth

- House - semi-detached
- 2 bedrooms
- 1 bathroom
- 2 reception rooms

Offers Around £250,000



Foxcroft, 8 Fox Close, Seisdon

-
- 2 bedrooms
- 1 bathroom
- 2 reception rooms

Offers Around £250,000



15 Nursery Walk, Tettenhall,
Wolverhampton

- House - terraced
- 2 bedrooms
- 1 bathroom
- 1 reception room

Offers Around £239,950



93 Hazel Grove, Wombourne,
Wolverhampton

- House - semi-detached
- 3 bedrooms
- 1 bathroom
- 1 reception room

Offers Around £210,000



3 Ashfields, High Street, Albrighton

- House - terraced
- 3 bedrooms
- 1 bathroom
- 1 reception room

Offers Around £209,950



45 The Beeches, Hanover Court,
Tettenhall, WV6 8QL

- Retirement Property
- 2 bedrooms
- 1 bathroom
- 1 reception room

Offers Around £195,950



Sale Agreed

Planning Permission, 40 Moatbrook Lane,
Codsall, WV8 1SD

- Bungalow - detached
- 3 bedrooms
- 2 bathrooms
- 1 reception room

Offers Around £175,000



17 Saxonfields, Tettenhall

- House - detached
- 5 bedrooms
- 3 bathrooms
- 3 reception rooms

Per Month £2,995

Search criteria:

Keywords:
All
Area: All

Minimum price: £0
Maximum price: Unlimited
Bedrooms: 0+

Page 6 of 7
21 May 2024
01:02:01



Ash Hill, Wolverhampton

- House - detached
- 4 bedrooms
- 2 bathrooms
- 1 reception room

Per Month £2,850



5 Old Hall, Wergs Hall, Wolverhampton

- Apartment
- 3 bedrooms
- 2 bathrooms
- 2 reception rooms

Per Month £2,500



226 Castlecroft Road, Castlecroft

- House - semi-detached
- 4 bedrooms
- 3 bathrooms
- 1 reception room

Per Month £1,400



The Ostlers, 3 Patshull Hall Mews, Burnhill Green

- Barn conversion
- 2 bedrooms
- 2 bathrooms
- 2 reception rooms

Per Month £1,250



14 Links Road, Penn

- House - semi-detached
- 3 bedrooms
- 1 bathroom
- 2 reception rooms

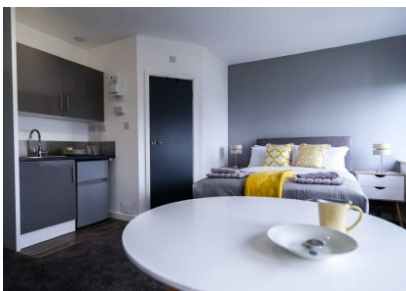
Per Month £1,150



3 Ashfields, High Street, Albrighton

- House - terraced
- 3 bedrooms
- 1 bathroom
- 1 reception room

Per Month £950



24, Birch Street, Wolverhampton

- Apartment
- 1 bedroom
- 1 bathroom
- 1 reception room

Per Month £717



5 Coulter Grove, Perton

- House - semi-detached
- 1 bedroom
- 1 bathroom
- 1 reception room

Per Month £700



124a Common Road, Wombourne

- Apartment
- 1 bedroom
- 1 bathroom
- 1 reception room

Per Month £695

Search criteria:

Keywords:
All
Area: All

Minimum price: £0
Maximum price: Unlimited
Bedrooms: 0+

Page 7 of 7
21 May 2024
01:02:02



Havana House Flat 1, 228 Penn Road,
Wolverhampton

- Apartment
- 1 bedroom
- 1 bathroom
- 1 reception room

Per Month £695