

Search criteria:

Keywords:
All
Area: All

Minimum price: £0
Maximum price: Unlimited
Bedrooms: 0+

Page 1 of 5
28 April 2024
23:03:34



Kelmscott House, School Road, Trysull

- House - detached
- 5 bedrooms
- 5 bathrooms
- 3 reception rooms

Per Month £4,950



37 Deacons Field, Brewood, Stafford

- House - detached
- 5 bedrooms
- 4 bathrooms
- 4 reception rooms

Per Month £4,950



Oaklands Farm, Lower Rudge, Pittingham

- House - detached
- 4 bedrooms
- 2 bathrooms
- 3 reception rooms

Per Month £3,995



The New House, Tinacre Hill, Wightwick

- House - detached
- 6 bedrooms
- 6 bathrooms
- 3 reception rooms

Per Month £3,750



Ketley House, School Road, Trysull

- Cottage - detached
- 4 bedrooms
- 2 bathrooms
- 2 reception rooms

Per Month £2,995



5 Old Hall, Wergs Hall, Wolverhampton

- Apartment
- 3 bedrooms
- 2 bathrooms
- 2 reception rooms

Per Month £2,800



Ketley View, School Road, Trysull

- House - detached
- 3 bedrooms
- 3 bathrooms
- 2 reception rooms

Per Month £2,700



Keepers Lodge, Popes Lane, Tettenhall

- House - detached
- 4 bedrooms
- 3 bathrooms
- 4 reception rooms

Per Month £2,650



18 Saxon Court, Tettenhall

- House - detached
- 4 bedrooms
- 2 bathrooms
- 4 reception rooms

Per Month £2,200

Search criteria:

Keywords:
All
Area: All

Minimum price: £0
Maximum price: Unlimited
Bedrooms: 0+

Page 2 of 5
28 April 2024
23:03:34



62 Mount Road, Tettenhall

- House - detached
- 4 bedrooms
- 1 bathroom
- 2 reception rooms

Per Month £1,950



Halfpenny Green, Bobbington,
Stourbridge

- House - semi-detached
- 5 bedrooms
- 3 bathrooms
- 1 reception room

Per Month £1,800



226 Castlecroft Road, Castlecroft

- House - semi-detached
- 4 bedrooms
- 3 bathrooms
- 1 reception room

Per Month £1,500



5c The Mitre, Lower Green, Tettenhall

- Apartment
- 2 bedrooms
- 1 bathroom
- 1 reception room

Per Month £1,495



114 Amos Lane, Wolverhampton

- House - detached
- 3 bedrooms
- 1 bathroom
- 3 reception rooms

Per Month £1,400



4, Rock House, Old Hill, Wolverhampton

- Apartment
- 2 bedrooms
- 1 bathroom
- 1 reception room

Per Month £1,350



32 Four Ashes Road, Brewood

- Bungalow - semi detached
- 3 bedrooms
- 1 bathroom
- 1 reception room

Per Month £1,300



23 Brenton Road, Penn, Wolverhampton

- House - detached
- 3 bedrooms
- 1 bathroom
- 2 reception rooms

Per Month £1,300



The Annexe, Hollies Lane, Pattingham

- Cottage - detached
- 2 bedrooms
- 1 bathroom
- 2 reception rooms

Per Month £1,295

Search criteria:

Keywords:
All
Area: All

Minimum price: £0
Maximum price: Unlimited
Bedrooms: 0+

Page 3 of 5
28 April 2024
23:03:35



Application Pending

43 Bratch Lane, Wombourne

- Bungalow - detached
- 3 bedrooms
- 2 bathrooms
- 2 reception rooms

Per Month £1,250



1 Lower Avenue Cottage, Coven

- House - semi-detached
- 3 bedrooms
- 2 bathrooms
- 1 reception room

Per Month £1,250



Application Pending

8 Brooklands Road, Albrighton

- House - semi-detached
- 3 bedrooms
- 1 bathroom
- 2 reception rooms

Per Month £1,200



20 Regent Road, Penn

- House - semi-detached
- 3 bedrooms
- 2 bathrooms
- 1 reception room

Per Month £1,100



23 Cheriton Grove, Perton

- House - semi-detached
- 3 bedrooms
- 2 bathrooms
- 2 reception rooms

Per Month £1,100



Application Pending

25 Elm Avenue, Wolverhampton, WV11 1DS

- House - semi-detached
- 3 bedrooms
- 2 bathrooms
- 2 reception rooms

£1,100



46 Regis Road, Tettenhall

- House - terraced
- 2 bedrooms
- 1 bathroom
- 2 reception rooms

Per Month £975



Application Pending

48 Derby Avenue, Claregate, Wolverhampton, WV6 9JR

- House - semi-detached
- 3 bedrooms
- 1 bathroom
- 1 reception room

Per Month £950



Application Pending

60 Sedgley Road, Wolverhampton, WV4 5JS

- House - terraced
- 3 bedrooms
- 1 bathroom
- 2 reception rooms

Per Month £925

Search criteria:

Keywords:
All
Area: All

Minimum price: £0
Maximum price: Unlimited
Bedrooms: 0+

Page 4 of 5
28 April 2024
23:03:35



Application Pending

9 Windmill Fold, Wombourne

- Apartment
- 2 bedrooms
- 2 bathrooms
- 1 reception room

Per Month £925



Application Pending

32 Joeys Lane, Codsall

- House - semi-detached
- 2 bedrooms
- 1 bathroom
- 2 reception rooms

Per Month £925



41 Upper Street, Tettenhall

- Apartment
- 2 bedrooms
- 1 bathroom
- 1 reception room

Per Month £895



Apartment 3, Beacon House, 267
Tettenhall Road, Newbridge

- Apartment
- 1 bedroom
- 1 bathroom
- 1 reception room

Per Month £875



Application Pending

40 Haslingden Crescent, Dudley

- House - terraced
- 2 bedrooms
- 1 bathroom
- 1 reception room

Per Month £870



2 Rose Lane, Bridgnorth

- House - semi-detached
- 2 bedrooms
- 1 bathroom
- 2 reception rooms

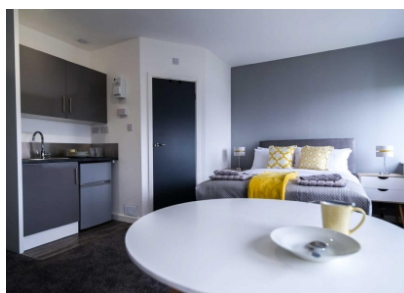
Per Month £850



6 Wessex Road, Parkfields,
Wolverhampton

- House - semi-detached
- 3 bedrooms
- 1 bathroom
- 1 reception room

Per Month £850



24, Birch Street, Wolverhampton

- Apartment
- 1 bedroom
- 1 bathroom
- 1 reception room

Per Month £738



12 Bilbrook Court, Bilbrook Road, Codsall,
WolverhamptonSouth Staffordshire

- Apartment
- 1 bedroom
- 1 bathroom
- 1 reception room

Per Month £695

Search criteria:

Keywords:
All
Area: All

Minimum price: £0
Maximum price: Unlimited
Bedrooms: 0+

Page 5 of 5
28 April 2024
23:03:35



Flat 3, 228 Penn Road, Wolverhampton

- Apartment
- 1 bedroom
- 1 bathroom
- 1 reception room

Per Month £650



Flat 3, 28 Tettenhall Road,
Wolverhampton

- Flat
- 1 bedroom
- 1 bathroom
- 1 reception room

Per Month £575