

# BERRIMAN EATON



Pickwick Gardens, Wolverhampton WV3 9EH

£3,500 Per Month



An exceptional detached residence situated within a highly sought-after modern development. This beautifully presented property offers spacious and contemporary accommodation throughout and enjoys a private position with a generous driveway and a stunning two-tier rear garden. The ground floor comprises a porch, entrance hall, guest cloakroom, three versatile reception rooms, a modern kitchen, and a separate laundry room. Upstairs, the principal bedroom features a stylish en suite and dressing room. A second bedroom also benefits from an en suite, with two additional double bedrooms served by a well-appointed family bathroom. Available part furnished now. A payment of one week's rent is required upon



13-15 High Street, Tettenhall, Wolverhampton, WV6 8QS  
Tel: 01902 749974 Email: [lettings@berrimaneaton.co.uk](mailto:lettings@berrimaneaton.co.uk) [berrimaneaton.co.uk](http://berrimaneaton.co.uk)



# BERRIMAN EATON

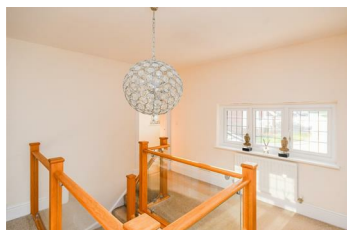
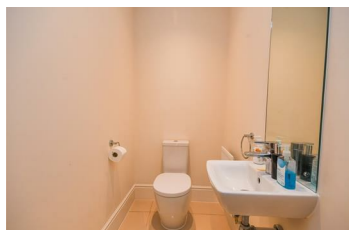


Pickwick Gardens, Wolverhampton WV3 9EH

£3,500 Per Month



application. A security deposit of five weeks' rent £4038.00 is payable on completion. (EPC B) (Council Tax Band G). All material information is readily available from the Agent or via the listing for this property on Rightmove or OnTheMarket.



13-15 High Street, Tettenhall, Wolverhampton, WV6 8QS  
Tel: 01902 749974 Email: [lettings@berrimaneaton.co.uk](mailto:lettings@berrimaneaton.co.uk) [berrimaneaton.co.uk](http://berrimaneaton.co.uk)