



4 Pound Street, Bridgnorth, Shropshire, WV16 4AP

BERRIMAN
EATON

4 Pound Street, Bridgnorth, Shropshire, WV16 4AP

With a garden, this character one bedroom cottage stands in the High Town just minutes from the High Street. Season ticket parking is available near-by. Telford - 12 miles, Shrewsbury - 22 miles, Kidderminster - 14 miles, Wolverhampton - 14 miles, Stourbridge - 15 miles, Birmingham - 27 miles, (All distances are approximate).

LOCATION

Most conveniently located and within walking distance to the bustling High Street. This position provides the freedom to participate on foot the towns excellent range of facilities that include a large selection of shops, pubs/bars, cafés and restaurants. Along with a selection of primary and secondary schooling, healthcare, hospital and an array of sports facilities. There are also many historic attractions for visitors such as the Severn Valley Steam Railway, Northgate museum, funicular cliff railway and River Severn walks.

ACCOMMODATION

Dating back around 200 years, these cottages form part of the historic High Town. With gas central heating, the property has gas and electrical certificates for 2023.

Entering from the pavement into an enclosed hall with a door leading into the lounge. This area has a corner fireplace with a fitted gas 'log burner', exposed beams, pine fronted storage cupboards and door leading into the breakfast kitchen. Here a stable door gives access to the rear courtyard, whilst the kitchen has fitted pine front units a cooker and fridge with a tiled floor and stairs up to the first floor landing.

The double bedroom faces the front, with the bathroom accessed from the landing has a white suite comprising of a bath with shower attachment, WC and hand basin.

OUTSIDE

At the rear of the cottage there is a shared courtyard area with one neighbour to give access to the garden view a flight of steps. Within the courtyard the property has a brick built outhouse that forms a utility with plumbing for the washing machine, power points and light. A centre path divides the two gardens, number 4 the left hand side which has a lawned garden and a summer house.

PARKING There is no on street or off street parking outside the cottage. There are two public car parks in the near by Listley Street that are currently free between 6pm and 8am. Innage Lane Car Park provides a season ticket (2023 approx £32pa per vehicle).

SERVICES:

We are advised all main services are connected. Verification should be obtained from your surveyor.

TENURE:

We are advised the property is FREEHOLD. Verification should be obtained from your solicitor.

LOCAL AUTHORITY

Shropshire County Council.
Tax Band: A.

VIEWING ARRANGEMENTS:

Strictly by appointment through the BRIDGNORTH OFFICE.

Tettenhall Office

01902 747744

tettenhall@berrimaneaton.co.uk

Bridgnorth Office

01746 766499

bridgnorth@berrimaneaton.co.uk

Wombourne Office

01902 326366

wombourne@berrimaneaton.co.uk

Lettings Office

01902 749974

lettings@berrimaneaton.co.uk

Worcestershire Office

01562 546969

worcestershire@berrimaneaton.co.uk

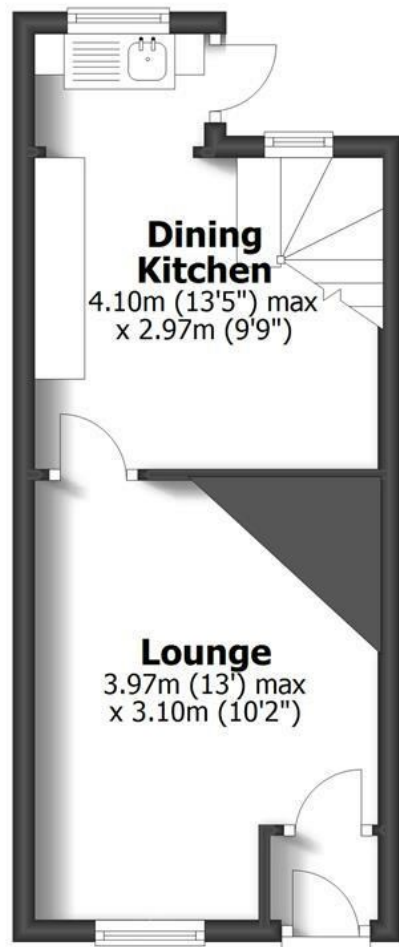
www.berrimaneaton.co.uk

Offers Around
£149,950

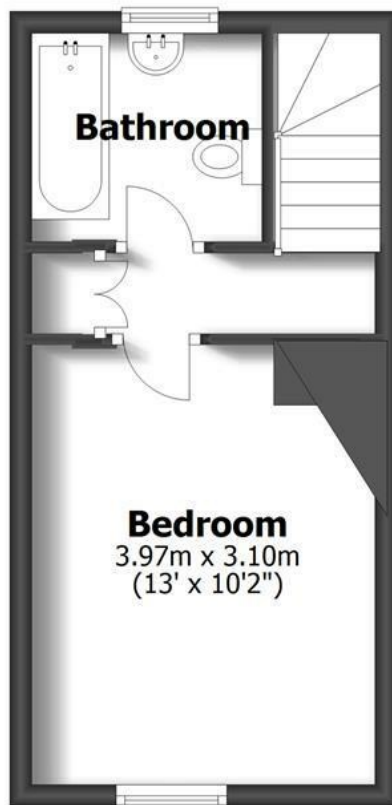
EPC: D

IMPORTANT NOTICE: Every care has been taken with the preparation of these Particulars but they are for general guidance only and complete accuracy cannot be guaranteed. Areas, measurements and distances are approximate and the text, photographs and plans are for guidance only. If there is any point which is of particular importance please contact us to discuss the matter and seek professional verification prior to exchange of contracts.

4 POUND STREET BRIDGNORTH



Ground Floor



First Floor

TOTAL: 44.1sq.m.475.1sq.ft.
INTERNAL FLOOR AREAS ARE APPROXIMATE
FOR GENERAL GUIDANCE ONLY - NOT TO SCALE
POSITION & SIZE OF DOORS, WINDOWS, APPLIANCES
AND OTHER FEATURES ARE APPROXIMATE



