



10 Cotswold Court, Goldthorn Hill Penn, Wolverhampton, West Midlands, WV2 4QF

BERRIMAN
EATON

10 Cotswold Court, Goldthorn Hill Penn, Wolverhampton, West Midlands, WV2 4QF

Suitable for investors, this spacious one bedroom apartment is currently rented out with a tenant in situ paying a monthly rental of £575.00 per calendar month. Situated within close proximity to Wolverhampton City Centre and a selection of local amenities, the apartment is located on the second floor and has an entrance hall with storage, a fully fitted kitchen with brand new combination boiler, a master bedroom with built in wardrobes, a spacious living room and bathroom with bath and shower. There is gas central heating and double glazing throughout. Externally there are communal grounds with one allocated parking space. DUE TO THE REMAINING TERM LEFT ON THE LEASE CASH BUYERS ARE PREFERRED.

LOCATION

Cotswold Court stands in a popular and established residential area within Wolverhampton and is conveniently situated for a wide range of local shopping facilities. There are regular public transport services and there is convenient access to the city centre itself.

DESCRIPTION

10 Cotswold Court comprises a second floor purpose built apartment and benefits from well proportioned one bedroom accommodation.

The property benefits from gas fired central heating and double glazing.

ACCOMMODATION

A communal entrance hall with stairs leading to the second floor landing has a front door opening into the HALL with a large storage cupboard and loft access with ladder. The SITTING ROOM has a double glazed window, there is a good sized DOUBLE BEDROOM with built in wardrobe and a fitted KITCHEN with a range of units with laminated tops, a stainless steel sink unit, matching wall cupboards, newly fitted wall mounted gas fired central heating boiler and part tiled walls. The BATHROOM has a bath with shower over, wash basin, WC and double glazed window.

OUTSIDE

The property stands within communal grounds and there is allocated parking for one.

LEASEHOLD

The property is held on a lease for a term of 99 years from 3rd April 1989. There is a monthly service charge of £121.23 payable to the management company, Midland Heart..

The property is currently rented out under an Assured Shorthold Tenancy Agreement at £575.00 per calendar month.

In accordance with the relevant legislation, it is hereby disclosed that the vendor of this property has a relationship with Berriman Eaton Limited.

Tettenhall Office

01902 747744

tettenhall@berrimaneaton.co.uk

Bridgnorth Office

01746 766499

bridgnorth@berrimaneaton.co.uk

Wombourne Office

01902 326366

wombourne@berrimaneaton.co.uk

Lettings Office

01902 749974

lettings@berrimaneaton.co.uk

Worcestershire Office

01562 546969

worcestershire@berrimaneaton.co.uk

www.berrimaneaton.co.uk

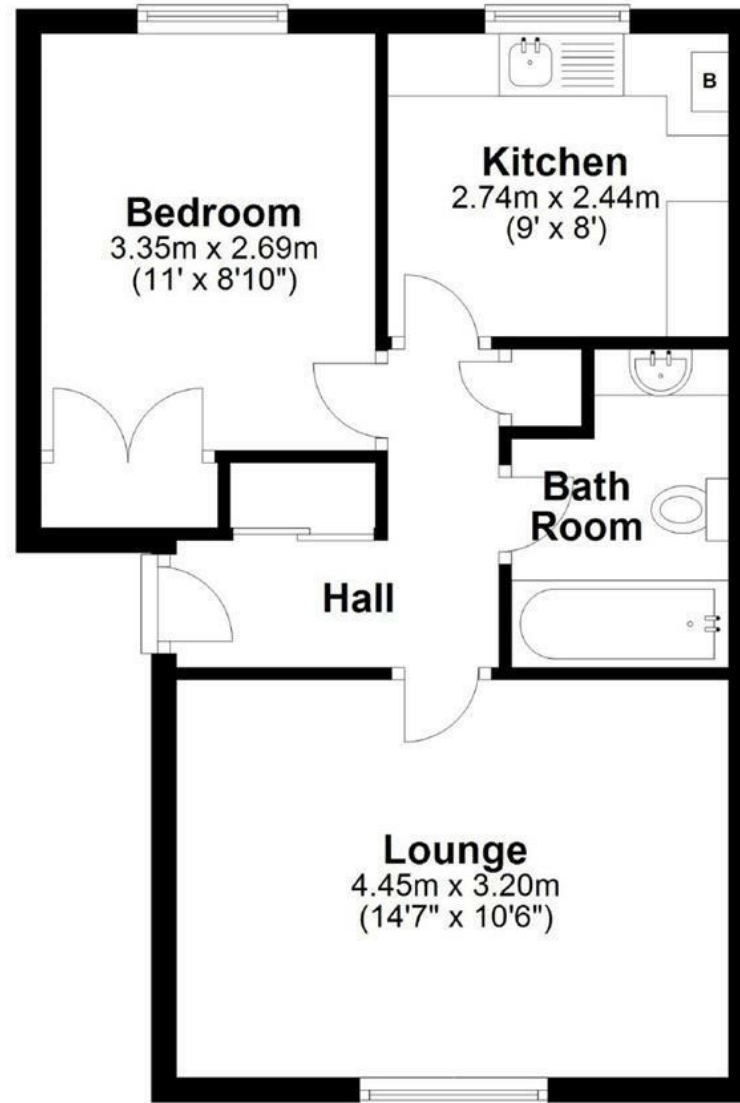
Offers Around
£75,000

EPC: D

IMPORTANT NOTICE: Every care has been taken with the preparation of these Particulars but they are for general guidance only and complete accuracy cannot be guaranteed. Areas, measurements and distances are approximate and the text, photographs and plans are for guidance only. If there is any point which is of particular importance please contact us to discuss the matter and seek professional verification prior to exchange of contracts.

10 COTSWALD COURT
GOLDTHORN HILL, PENN

TOTAL: 41.7sq.m. 449sq.ft.
INTERNAL FLOOR AREAS ARE APPROXIMATE
FOR GENERAL GUIDANCE ONLY - NOT TO SCALE
POSITION & SIZE OF DOORS, WINDOWS, APPLIANCES
AND OTHER FEATURES ARE APPROXIMATE



Second Floor

