

BERRIMAN EATON

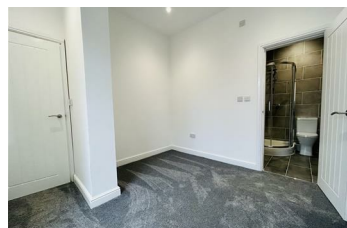


Beacon House, Wolverhampton WV6 0DE

£995 Per Month



A beautiful appointed two-bedroom, ground floor apartment situated within this highly sought after location. The apartment benefits from its own front door and leads into the contemporary open plan kitchen and living room. The apartment offers, two bedrooms, one with ensuite shower room and a further shower room. Located within walking distance to a large selection of local amenities and providing excellent access into the City Centre. Available now on a furnished basis. (EPC.C) (Council Tax. C). A payment of one weeks rent is to be paid upon acceptance of applying for the property and a security deposit of £1,148.00 is payable upon completion. All material information is readily available from the Agent or via the listing for this property on Rightmove or OnTheMarket.



13-15 High Street, Tettenhall, Wolverhampton, WV6 8QS
Tel: 01902 749974 Email: lettings@berrimaneaton.co.uk berrimaneaton.co.uk