

# BERRIMAN EATON

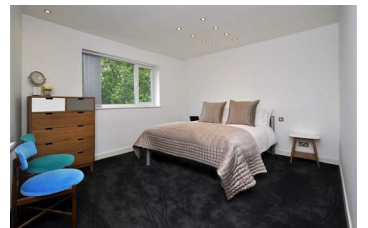


Grove Lane, Wolverhampton WV6 8NJ

£2,250 Per Month



A unique, contemporary residence providing incredibly stylish accommodation with bespoke interior design in an exclusive and sought after backwater lane. Reception hall, inner hall, guest cloakroom, utility area, open plan reception room and kitchen. Principal suite, two further bedrooms and bathroom. Driveway, double garage and landscaped rear garden. Available now on a furnished basis. A payment of one weeks rent is to be paid upon acceptance of applying for the property. (EPC. D) (Council Tax Band. F)



13-15 High Street, Tettenhall, Wolverhampton, WV6 8QS  
Tel: 01902 749974 Email: [lettings@berrimaneaton.co.uk](mailto:lettings@berrimaneaton.co.uk) [berrimaneaton.co.uk](http://berrimaneaton.co.uk)