

# BERRIMAN EATON

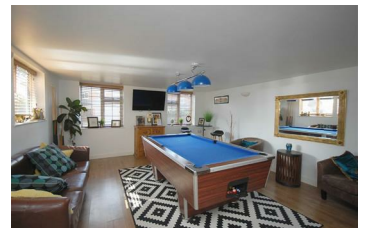


## Saxon Court, Wolverhampton WV6 8SA

£2,200 Per Month



Situated in this prestigious residential area, this expansive family home boasts convenient walking access to Tettenhall village and its array of local amenities. The property offers a well-appointed layout, featuring driveway parking to the front, an inviting entrance hall with a cloakroom and guest w/c, and a spacious living room adorned with a striking fireplace and access to the rear garden. Additionally, there's a sitting room and a versatile family/entertainment room. The generously sized family kitchen is a focal point, equipped with a central island, a cozy breakfast area, and a utility room for added convenience. Completing the ground floor is a delightful conservatory, offering a tranquil retreat. Upstairs, the first floor



# BERRIMAN EATON



## Saxon Court, Wolverhampton WV6 8SA

£2,200 Per Month



comprises four double bedrooms, including a master suite boasting fitted wardrobes and an en suite shower room., with a principal family bathroom, featuring both a bath and a shower. Available from Mid May 2024 unfurnished. A Security deposit of £2538.00 is payable upon completion. A payment of one weeks rent is to be paid upon acceptance of applying for the property. (EPC: D) (Council Tax Band F)

